

**Ministerio de Industria**  
Presidencia de la Nación



# Valorization of residual biomass derived from the industrialization of wood and management of the forest for the development of solid biofuels and bio products in Argentina

Valorización of biomass resources  
National Institute of Industrial Technology - INTI





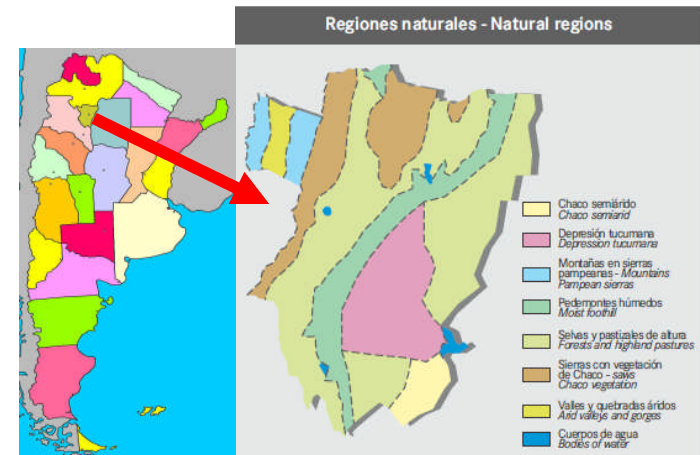
## 1. Project IDEA

Consolidate the R&D Center **INTI Tucumán** and its researchers by the incorporation of strategic equipment to promote the insertion of the forestry industry in the production of biofuels derived from the waste generated from its activity, articulating with a multidisciplinary group capable of detecting and developing biomass clusters with the possibility of implementing the proposed methodologies and technologies.

The participation of professionals from institutions where the bioenergy sector has already been consolidated and normalized will save large investments in the sector and develop the biofuels market in less time. All the results will be reflected in the development of **technical assistance services** for the forestry-industrial sector as well as the application of the equipment or instruments requested.

The Technical Unit of the INTI Tucumán Center is proposed as project coordinators as they are the reference in the subject of biomass valorization in our institution and they collaborate and coordinate projects throughout the country with various R&D Regional Centers through the INTI Biomass Network coordinated from this headquarters.

This work will establish the bases for the normalization of solid biofuels in Argentina working not only with the counterpart institution but with the national organizations that carry out the certification and standardization processes.



Province of Tucumán, industrial pole of the north with the potential to develop dendroenergy biofuels given that the sugar industry of almost the entire country is centralized in its 22500km<sup>2</sup>



Ministerio de Industria  
Presidencia de la Nación

INTI

## Profile of the institutions

In the case of energy derived from **BIOMASS**, the R&D Center INTI Tucumán works on the development of technological solutions for the use of waste derived from agro and forest industry and the mitigation of environmental problems through the insertion of technologies working together with **SMEs** of the region respecting the environment and the food equation.

**The partners** for the project must be specialized institutions in technologies for the exploitation of forest biomass, its value chain, the complement with the agricultural industry and the processes of certification and standardization in Europe regarding the development of biofuels such as **pellets, briquettes** and its different variants of industrial application as well other high value products.

They must have infrastructure, characterization laboratories and / or pilot plants where INTI technicians can carry out training and specific training.

At the same time public or private institutions interested in developing or linking companies and technologies to the market development potential in Argentina.





## Some of the expected results

Aligned to national programs for the use of renewable energy from biomass and supported by promotion laws, the proposal aims to:

- ✓ **Consolidate a multidisciplinary team for the development of new INTI technology services.**
- ✓ **Articulate with reference institutions worldwide and bring their services and companies from their respective countries closer to the market development potential of Argentina in terms of solid biofuels.**
- ✓ **Detect and promote the development of forestry clusters that can add to the bioenergy sector from its value waste.**
- ✓ **Diversify the field of action of SMEs and forestry-industrial companies**
- ✓ **Strengthen value chains of different actors AFI**
- ✓ **Provide technical assistance for the use of biomass waste / resources.**

Ministerio de Industria  
Presidencia de la Nación



You can not take advantage of the known ...

# Thank you

**Martín Rearte, Ing.**

Valorization of Biomass Resources

Centro INTI – Tucumán

[mrearte@inti.gov.ar](mailto:mrearte@inti.gov.ar)

