

Chilean Forest Research Institute (INFOR)

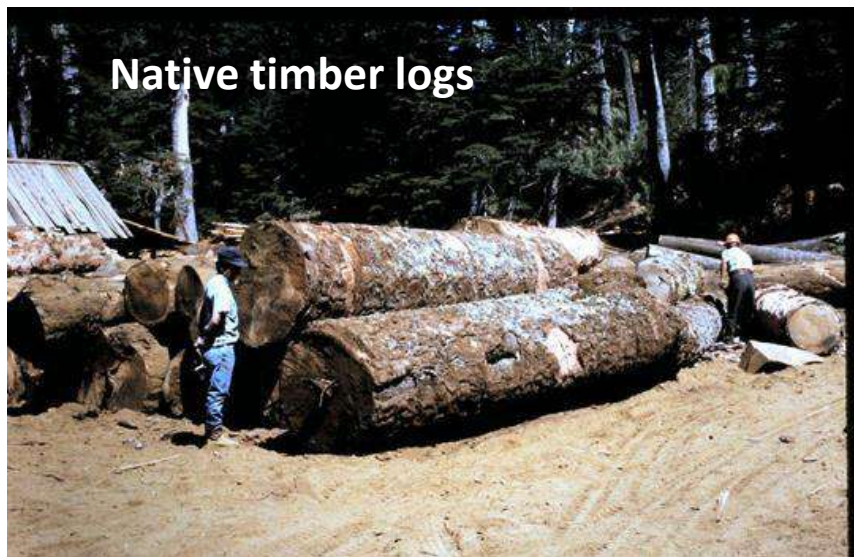


Gobierno
de Chile



- ✓ The Forestry Institute (INFOR) is a technological research Institute of the State of Chile, attached to the Ministry of Agriculture. It was born in 1961 for providing value to forestry progress and development.
- ✓ The mission: Contribute to Chilean forestry development, promoting the sustainable use of forest ecosystems for the society benefit, through the creation and transfer of knowledge, innovative products, services of excellence and relevant and timely forest information for decision makers.
- ✓ The budget comes from contracts with the Ministry of Agriculture and Economy in additions to grants of national funds and technical consulting

INFOR – the old times



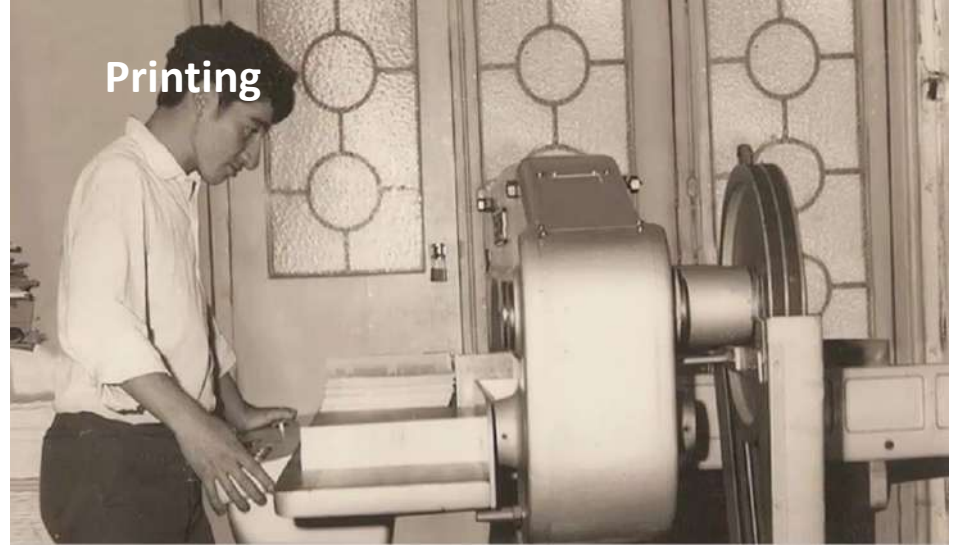
INFOR – the old times



INFOR



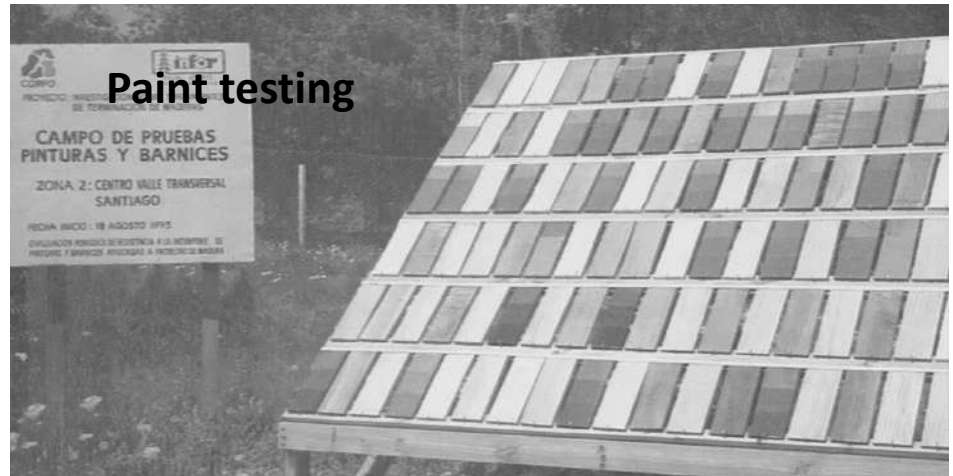
Forest inventories



Printing



Laminated timber



Paint testing



PRESIDENT: Executive Director of the Forest Service
(CONAF)Ministry of Agriculture

VICE PRESIDENT: Representative of Ministry of Economy

DIRECTORS:

Director of Agriculture Development Services (INDAP)
Representative of Ministry of Economy
Representative of Small Landowners(MUCECH)
President of Forest Companies Board (CORMA)
Representative of Small Forest Industry
Representative of Ministry of Agriculture

INFOR - offices



INFOR

Diaguitas Office



Metropolitana Office



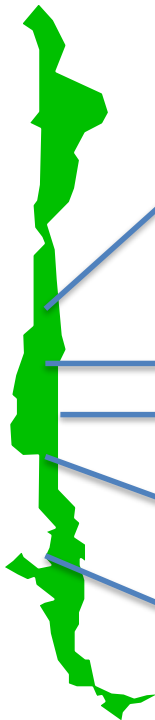
Biobío Office



Valdivia Office



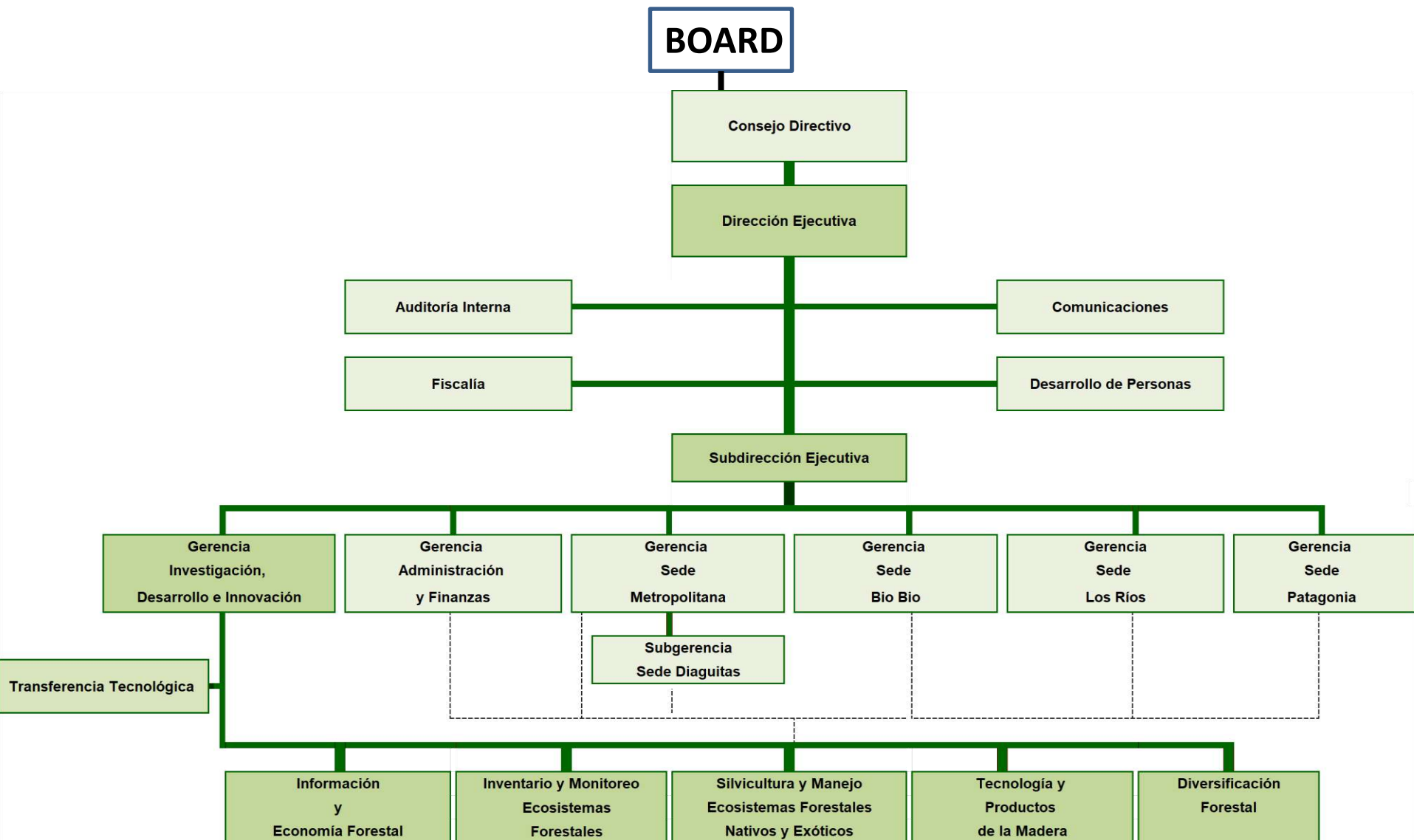
Patagonia Office



INFOR – organization chart



INFOR



BUDGET in 1000 US\$

BUDGET	Year 2017	Year 2018
Sale of Services (consulting), Own Income, Product Sales	1.099.015	746.364
National Funds / Research	837.294	731.109
National Contest Funds / Strengthening and Development Fund	-	431.227
Foreign Funds	1.607.852	1.618.502
Ministry Transfer Agreement	6.421.686	5.706.712
Total	9.965.848	9.233.914
Average US\$ dollar	615,22	695,69

BUDGET in %

BUDGET	Year 2017	Year 2018
Sale of Services (consulting), Own Income, Product Sales	11%	8%
National Funds / Research	8%	8%
National Contest Funds / Strengthening and Development Fund	0%	5%
Foreign Funds	16%	18%
Ministry Transfer Agreement	64%	62%
Total	100%	100%

INFOR is focused on research, development and innovation, providing:

- **Forest ecosystems inventory and monitoring**
- **Forest economics and policy**
- **Native and exotic ecosystem silviculture and forest management**
- **Wood industry and technology**
- **Forest diversification**

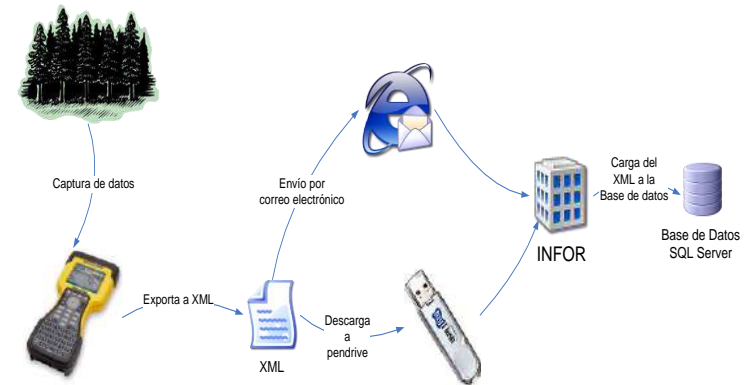
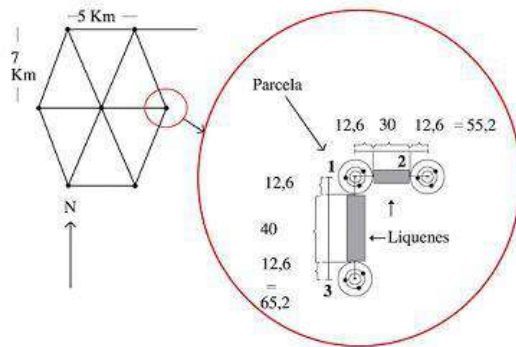
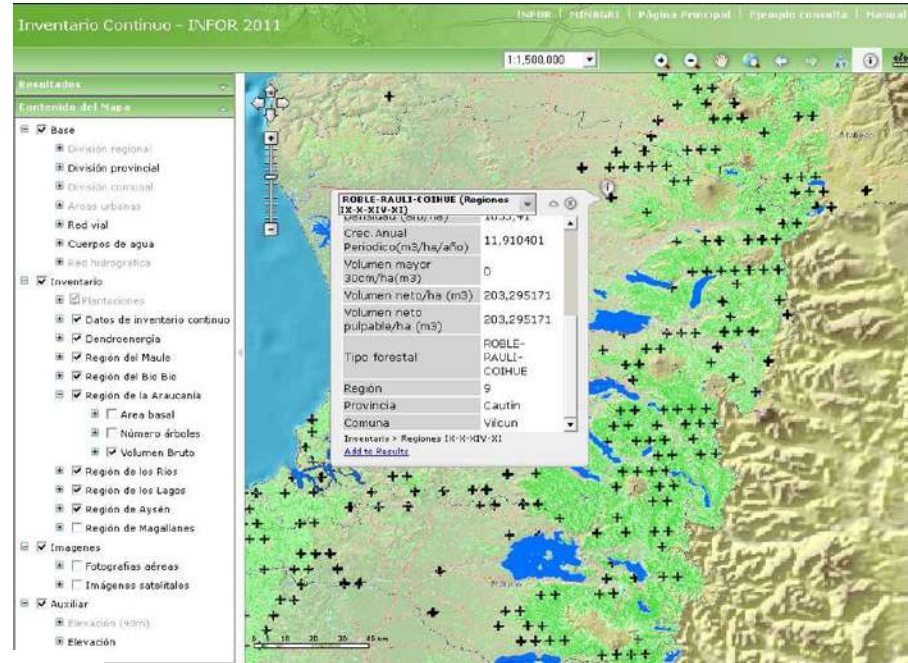
- **Forest ecosystems inventory and monitoring**
 - Forest Inventory
 - Adaptation and mitigation to climate change
 - Forest and water ecosystems



Continuous forest inventory and monitoring

Web Mapping:

<http://mapaforestal.infor.cl>



INTERNATIONAL BUDGET (FAO):

SIMEF:

The integrated system for monitoring and evaluation of the native forest ecosystems (SIMEF) is a national initiative that establishes a coordinated work among public institutions and it involves local communities for monitoring native forest ecosystems.

OBJECTIVE:

To support decision-making about the native forest management, contributing to the responsible use of forest resources and the conservation of ecosystems and their biodiversity. The final purpose of SIMEF is to contribute to assure a better quality life for the communities that depend on the forest and the Chilean society as a whole.

METHODOLOGY:

SIMEF integrates, facilitates and promotes the use of standardized and updated information about the condition and evolution of native forest ecosystems of our country.

INTERNATIONAL BUDGET:

CLIMATE CHANGE, GREENHOUSE GAS:

Dr. Yasna Rojas has been, since 2015, a member of the Task Force Bureau for the National Greenhouse Gas Inventories of the IPCC, as representative of the South America region. This work group has the task of assisting and advising about methodology guidelines and evaluation reports of the Greenhouse Gas Inventories and activities such as workshops and expert meetings.

- **Forest economics and policy**
 - Economic studies
 - Forest statistics



Forest economic information and analysis



Acceso al módulo Web

<http://www.infor.cl>



ESTADÍSTICAS FORESTALES

Sitio Infor | Cerrar sesión

INFOR

Sector Forestal | Comercio Internacional | Industria | Precios | Estadísticas Regionales | Consulta en línea

Exportaciones por mes 1980 - 2010
(Millones de US\$ FOB)

Nueva Plataforma de Estadística Forestales

Trayectoria

Publicaciones

Publicaciones en línea

Consultas Bases de Datos

Publicaciones

Consulta en Línea Exportaciones Forestales

Consulta en Línea Precios Forestales

Calendario de Actualizaciones

Acerca del Área | Servicios | Publicaciones | Factores de Conversión | Observatorio Leña | Sitios de Interés | Registro Usuarios | FAQ | Ayuda

Caracterización del Sector en las áreas de comercio, industria y precios.

Publicaciones en línea

Consultas Bases de Datos

- **Native and exotic ecosystem silviculture and forest management**
 - Recovery and eco systemic management of native forest resources
 - Forest plantation management
 - Conservation and genetic improvement



Recovery and management of native forest



How to do native forest management?

THE CHALLENGE

Regenerate

Focus on high value species

Management - Silviculture (nat. dyn.)

Increase quality and yield

THE NATIVE FOREST NOW:

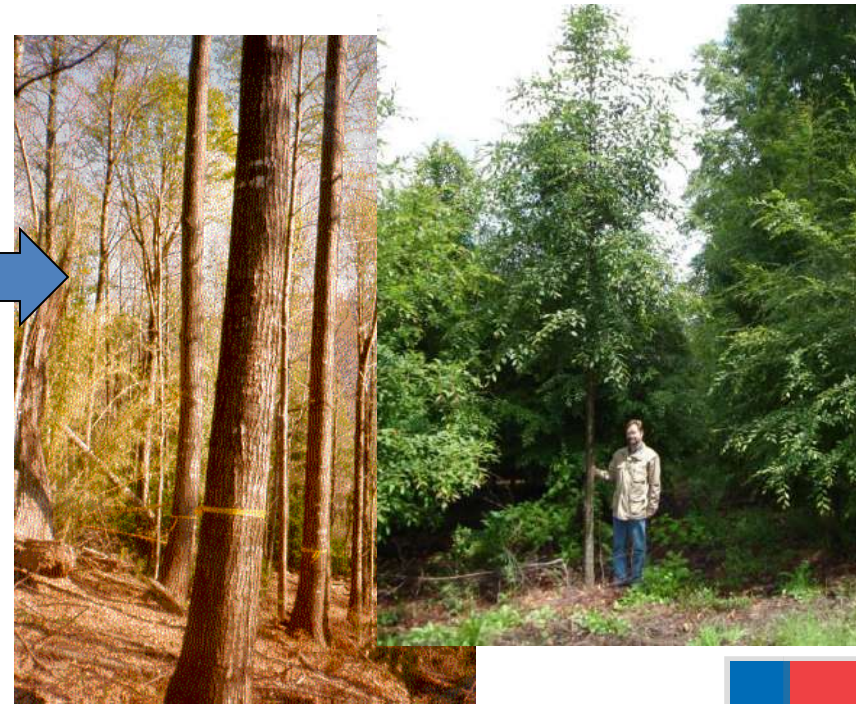
Not managed

Big number of species

Un even aged

Bad quality

Degraded and old



Genetic conservation and improvement



Seed collection area



Climate change, environment and water supply



- **Wood industry and technology**
 - Structural construction timber
 - Engineering timber products



Support to the small and medium industry

Construction and certification





FACHADA ESTE



- **Forest diversification**
 - Non-timber forest products
 - Development of sustainable agroforestry systems
 - Species diversification for forest
 - Forestry biomass and energy



Non timber forest products and agroforestry





Agroforestry



Chilean Forest Research Institute (INFOR)



Gobierno
de Chile

