

# LEARNFORCLIMATE

Learning to realize multiple forest policy objectives under climate related stress and disturbance

Madrid, September 28, 2022

LEARNFORCLIMATE

<https://www.ltu.se/research/subjects/Statsvetenskap/Forskningsprojekt/LEARNFORCLIMATE-1.219370?l=en>

Karin Beland Lindahl, Political Science, Luleå University of Technology, Sweden)



This project has received funding from the European Union's Horizon 2020 research and innovation programme under grant agreement No 773324

## Project partners

- Luleå University of Technology (LTU), Sweden
- Swedish University of Agricultural Sciences (SLU), Sweden
- University of Freiburg (ALU-FR), Germany
- European Forest Institute (EFI), Germany
- University of Ljubljana (UL), Slovenia
- Institute of Philosophy and Sociology of the Polish Academy of Sciences (IFiS), Poland
- University of Agriculture (UAK), Poland

+ forest owner associations, companies and E-NGOs in each country

Total project budget: 1 474 977 €

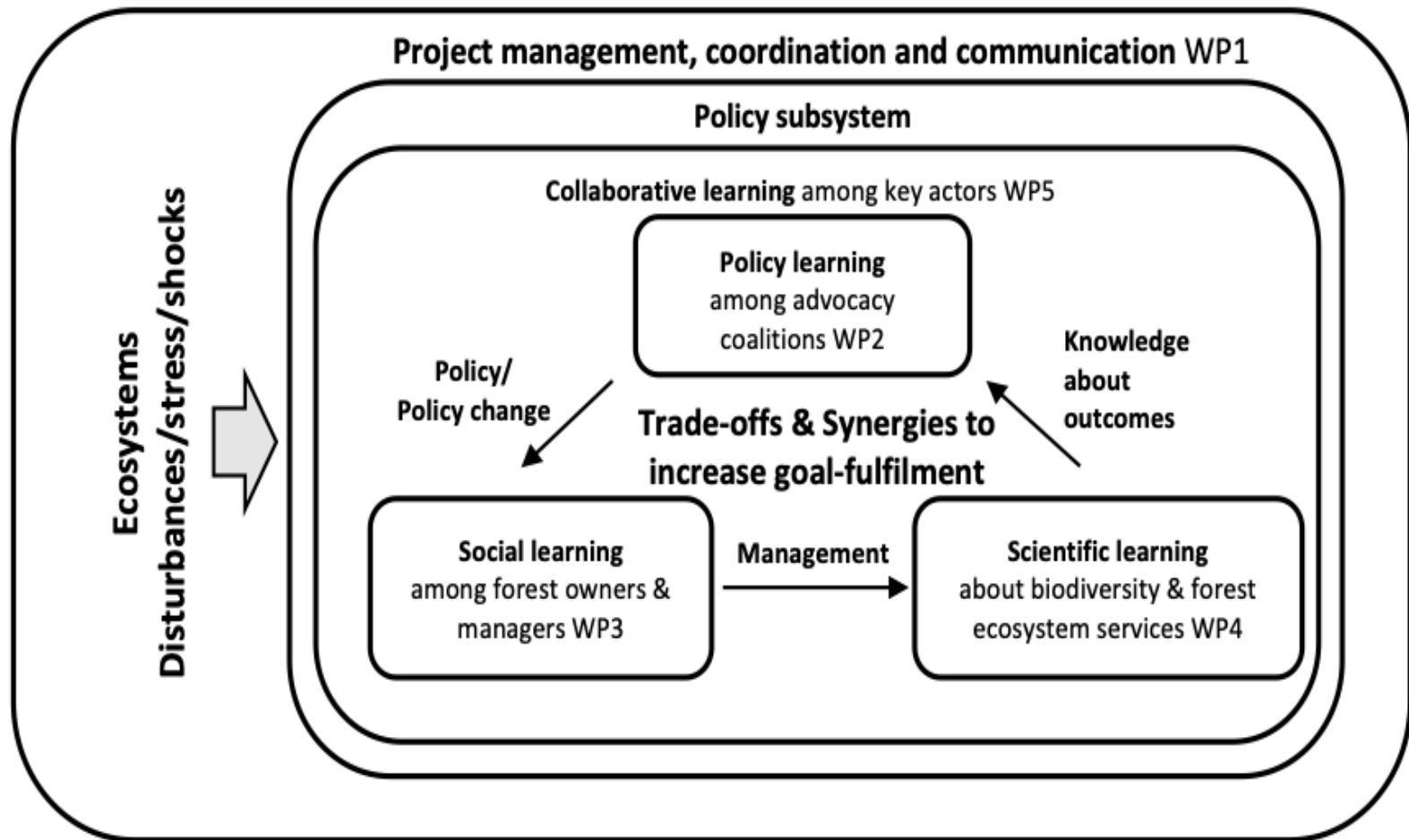
- Project start: May 9, 2022
- Project end date: May 9, 2025

## Introduction

**Aim: to support learning that enables concurrent achievement of multiple forest related SDGs and EU objectives while responding to the constraining - and enabling - roles of climate change related stress and disturbances.**

- **Do policy makers learn? Does policy change? Under what conditions?**
- **How do forest managers and owners respond and learn?**
- **How do different responses affect long term ecosystem service delivery? Synergies and tradeoffs?**
- **How can learning be accelerated to promote goal achievement?**

# An integrated transdisciplinary approach



Document  
analysis  
Interviews  
Focus groups

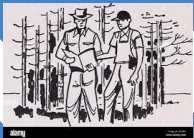
- **WP2:** to identify preconditions for forest-related *policy* and *policy* change; explore learning of national *advocacy coalitions*

National

EU



Regional/  
local



Landscape



Local to EU





Document analysis  
Interviews  
Focus groups

Survey  
Interviews  
Focus groups

National  
EU

- **WP2:** to identify preconditions for forest-related *policy* and *policy* change; explore learning of national *advocacy coalitions*

Regional/  
local

- **WP3:** to investigate *forest owners' and managers' responses* to policy and disturbance; explore opportunities to support forest adaptation and learning

Landscape

Local to EU



National  
EU

- **WP2:** to identify preconditions for forest-related *policy* and *policy* change; explore learning of national *advocacy coalitions*

Document analysis  
Interviews  
Focus groups

Regional/  
local

- **WP3:** to investigate *forest owners' and managers' responses* to policy and disturbance; explore opportunities to support forest adaptation and learning

Survey  
Interviews  
Focus groups



Landscape

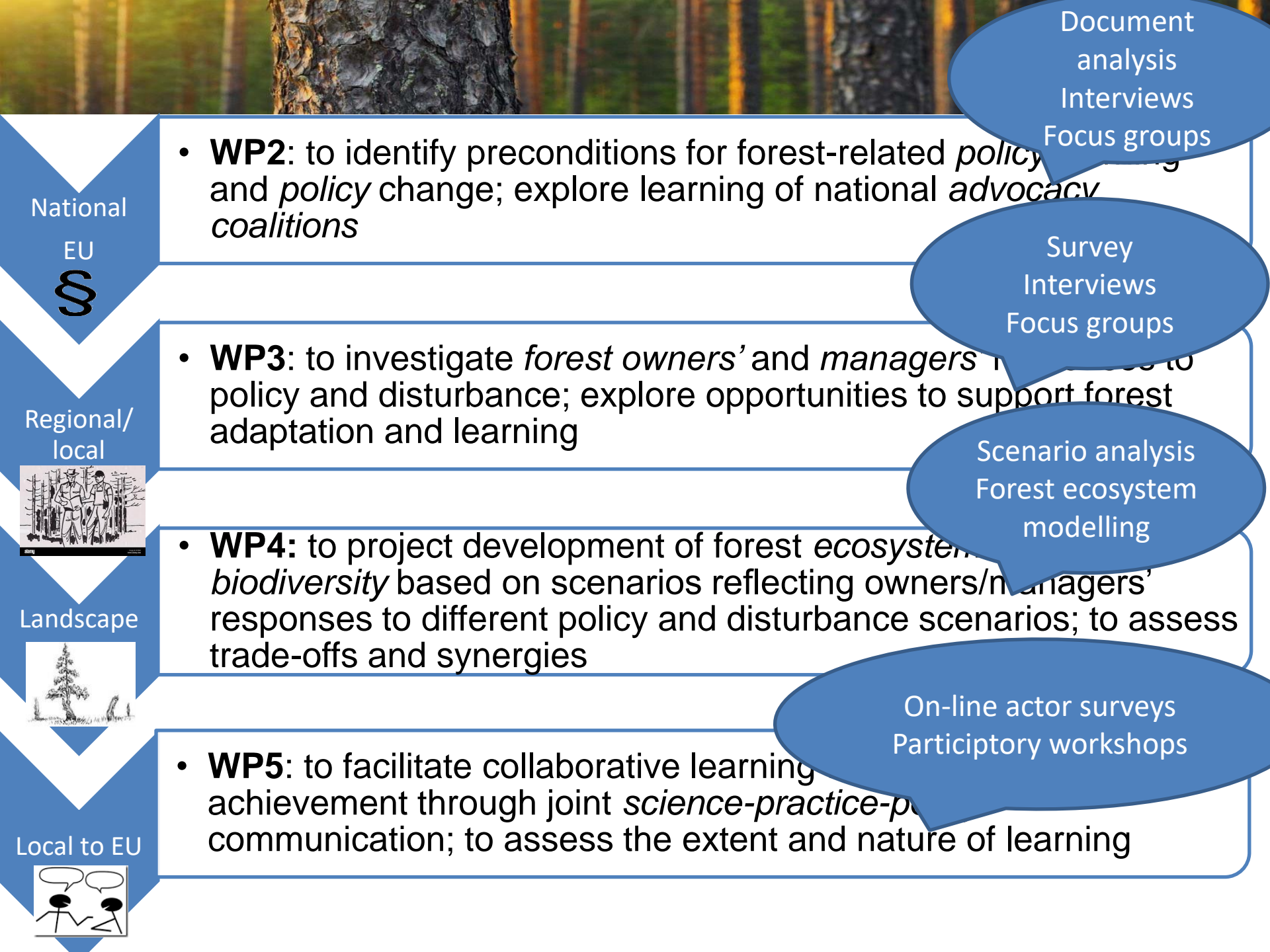
- **WP4:** to project development of forest ecosystem *biodiversity* based on scenarios reflecting owners/managers' responses to different policy and disturbance scenarios; to assess trade-offs and synergies

Scenario analysis  
Forest ecosystem modelling



Local to EU





National  
EU

- **WP2:** to identify preconditions for forest-related *policy* and *policy* change; explore learning of national *advocacy coalitions*

Document analysis  
Interviews  
Focus groups

Regional/  
local



- **WP3:** to investigate *forest owners' and managers' responses* to policy and disturbance; explore opportunities to support forest adaptation and learning

Survey  
Interviews  
Focus groups

Landscape



- **WP4:** to project development of forest *ecosystem biodiversity* based on scenarios reflecting owners/managers' responses to different policy and disturbance scenarios; to assess trade-offs and synergies

Scenario analysis  
Forest ecosystem modelling

Local to EU



- **WP5:** to facilitate collaborative learning and *achievement* through joint *science-practice-policy* communication; to assess the extent and nature of learning

On-line actor surveys  
Participatory workshops





- **WP2:** to identify preconditions for forest-related *policy* learning and *policy* change; explore learning of national *advocacy coalitions*



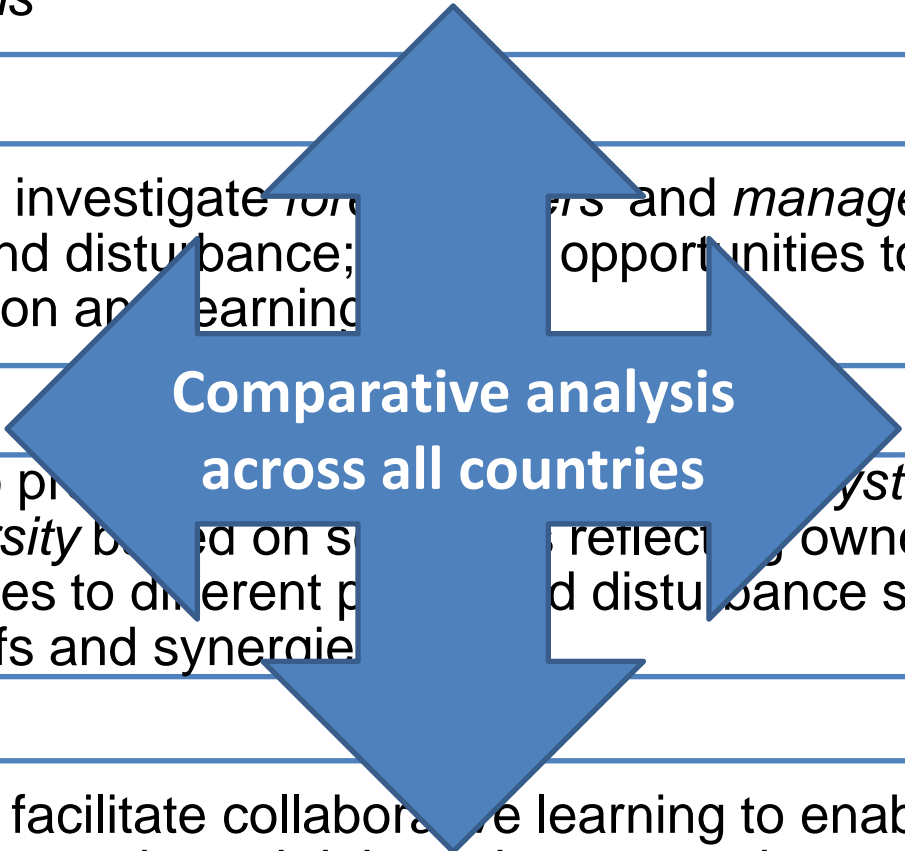
- **WP3:** to investigate *foresters* and *managers'* responses to policy and disturbance; explore opportunities to support forest adaptation and learning



- **WP4:** to provide *ecosystem services* and *biodiversity* based on *stakeholders'* responses to different *policy* and disturbance scenarios; to assess trade-offs and synergies



- **WP5:** to facilitate collaborative learning to enable goal achievement through joint *science-practice-policy* communication; to assess the extent and nature of learning



## Expected outputs

Knowledge about  
factors enabling or  
constraining  
learning and policy  
goal achievement

Scientific articles  
Popular Reports  
Research Brief

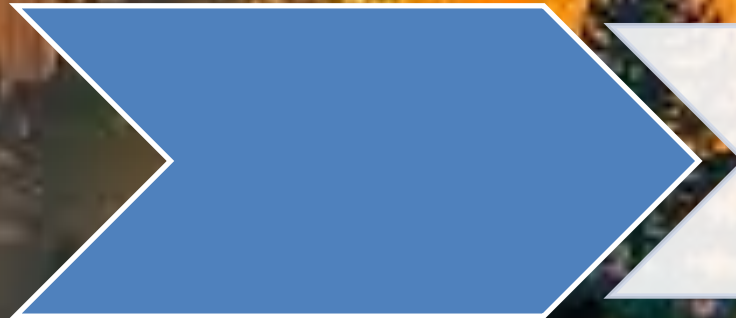
# Expected outputs

Knowledge about factors enabling or constraining learning and policy goal achievement

Scientific articles  
Popular Reports  
Research Brief

Innovative methods for promoting and assessing learning

Digital Social Learning Platform  
Participatory workshops + reports  
Participatory scenario analysis



## Expected outputs

Knowledge about factors enabling or constraining learning and policy goal achievement

Scientific articles  
Popular Reports  
Research Brief

Innovative methods for promoting and assessing learning

Digital Social Learning Platform  
Participatory workshops + reports  
Participatory scenario analysis

Decision support and policy recommendations to promote learning and goal achievement

Policy Briefs with recommendations  
Final Project Conference

**Thank you!**

karin.beland.lindahl@ltu.se

**ForestValue**

Website: <https://forestvalue.org/>

Twitter: <https://twitter.com/ForestValue2017>

LinkedIn: <https://www.linkedin.com/groups/12110816/>